



**CHNT**

Empower the World

# T&D PRODUCT PORTFOLIO



# CHINT GLOBAL

## Our Solutions includes

- Crystalline Silicon Manufacturing
- Wires & Cables
- Low-voltage Electrical
- New Energy
- Power T&D
- Meters
- Power System & Energy Storage
- Integrated Power Distribution
- Building Electrical

CHINT was established in 1984. Over the years, thanks to our rapid development, CHINT has become the world's leading provider of intelligent energy solution for the entire industrial chain, offering the most comprehensive range of products, from Plant to Plug. In 2023, our annual sales revenue exceeded 22.1 billion dollars, with total assets surpassing 25 billion dollars.

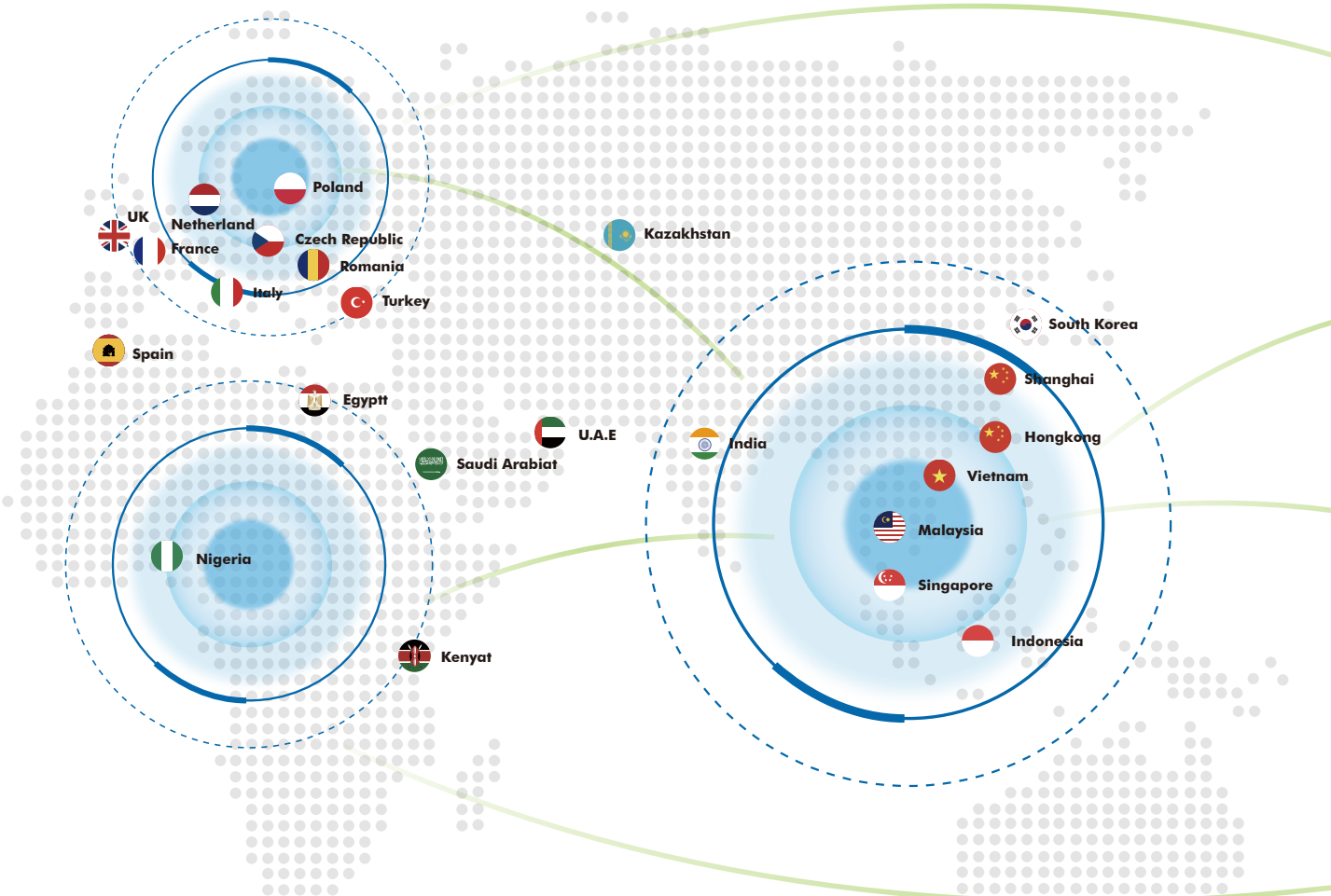
Over three decades of global expansion, our business network has grown to cover more than 140 countries and regions worldwide. We operate in various areas including low-voltage, power transmission and distribution, water, gas and electricity metering, and green energy sectors such as solar. CHINT employs more than 50,000 people worldwide, creating over 500,000 jobs in the supply chains.

Through the integration of businesses and continuous upgrading, CHINT Global has further established its supply chain. This market localization has also enabled us to adopt flexible business models such as smart operation and maintenance, financing, and other integrated technical services for the global market.

<b>USD 25 Billion</b> Annual Sales Revenue of CHINT Group	<b>USD 22.1 Billion</b> Annual Total Assets of CHINT Group	<b>140+</b> Countries and Regions
<b>4%-12%</b> Annual R&D Investment Obtained from the Percentage of Sales	<b>30+</b> Global Subsidiaries	<b>24%</b> YoY Revenue Growth in 2023 of CHINT Global
<b>50,000+</b> Employees Worldwide	<b>8,000+</b> Accumulated Authorized Patents	<b>66%+</b> Localization Rate of CHINT Global Employees

\* Data as of December 31, 2023





# GLOBAL OPERATION LOCALIZATION

Rooted Locally, Serving the Globe



**Sunlight** **Singapore & Malaysia**  
Main Products: Low-voltage Switchgears



**Metering Factory** **Uganda**  
Main Products: Meters



**Solar Factory** **Thailand**  
Main Products: PV Module, PV Cell



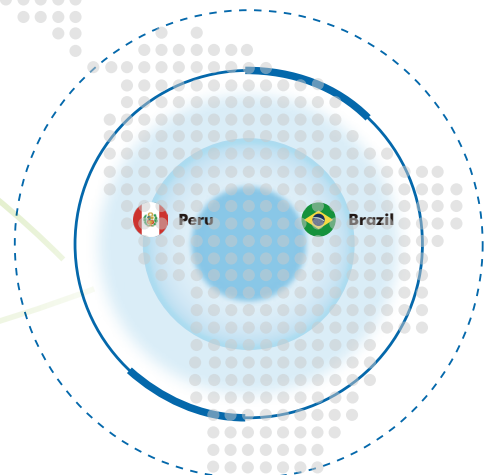
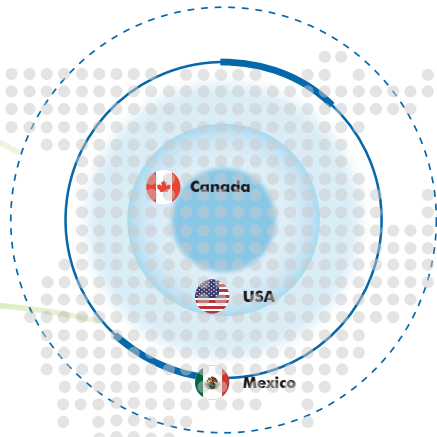
**Sunlight** **Vietnam**  
Main Products: MSB, MCC, SDB, DB, CU, Fire Pump Panel, Weatherproof Panel, String Combine Box, Solar Switchboard



**SchneiTec CHINT** **Cambodia**  
Main Products: MV Equipment including 22kV Distribution Transformer, Switchgear, Smart RMU, Capacitor Bank



**CHINT - EGE MAC** **Egypt**  
Main Products: Full Series of Low-voltage Switchgears



Business Covering

**140+**

Countries and Regions



**30+**

Global Subsidiaries



**2,300+**

Global Distributors



**66%+**

Localization Rate of Global Employees



After more than 30 years of overseas expansion, CHINT Global has subsidiaries and offices in Europe, North America, Asia-Pacific, West Asia & Africa and Latin America. Its business footprint covers more than 140 countries and regions worldwide, continuously providing the world with more efficient smart electricity and clean energy.



**Haining Solar Intelligent Factory**

China

Main Products: PV Module, PV Cell



**Power T&D Jiaxing Factory**

China

Main Products: MV and LV Switchgear, C-GIS, MV Circuit Breaker, Prefabricated Substation



**Power T&D Shanghai Factory**

China

Main Products: Power Transformer, GIS, MV and LV Switchgear, HGIS, HV Circuit Breaker, Disconnector



**Wenzhou Low-voltage Intelligent Factory**

China

Main Products: Low-voltage Components



**CHINT ATC**

Saudi Arabia

Main Products: RMU and Intelligent Power T&D Products of 33kV and below



**CHINT-AJLAN & Bros**

Saudi Arabia

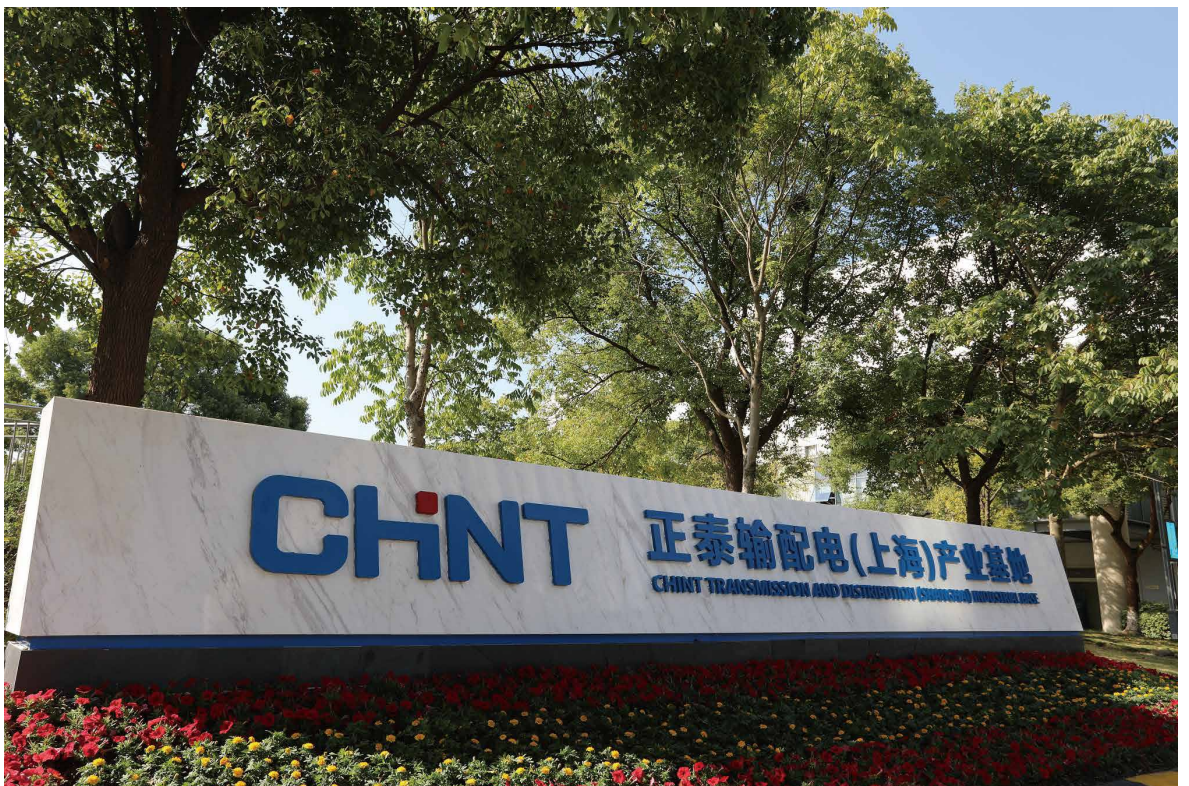
Main Products: Low-voltage Components



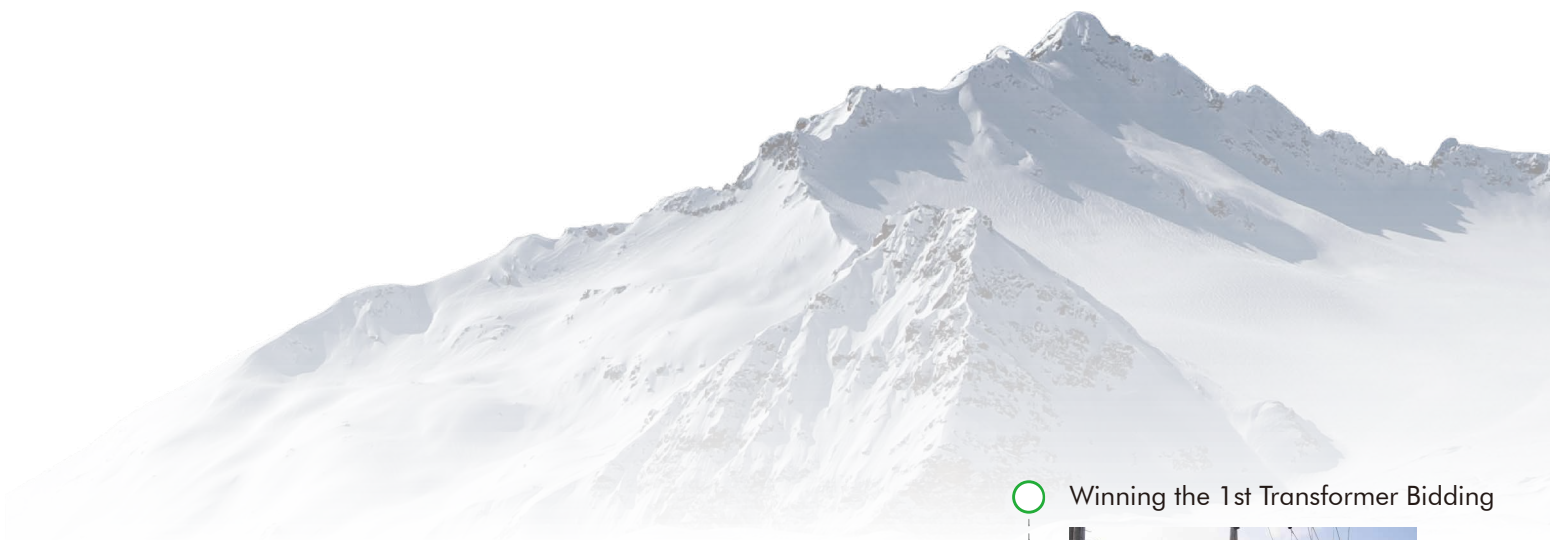


# CHINT ELECTRIC

CHINT Electric Co., Ltd is a subsidiary of CHINT Group Corporation. With the wide range of transmission and distribution products, as well as the systematic and professional solution, CHINT Electric has supplied products and EPC services to customers over 140 countries across different industrial sectors, including power utility, renewable energy, oil and gas, metallurgy, railway and so on. Now CHINT Electric Co., Ltd has become one of the main players for Power T&D equipment and EPC services in the world.



# CHINT ELECTRIC



1995



○ Entering Power T&D field

2004

○ Songjiang Manufacturing Base



2006

2008



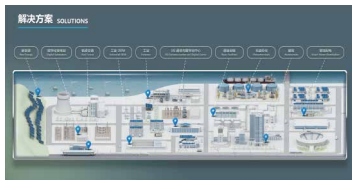
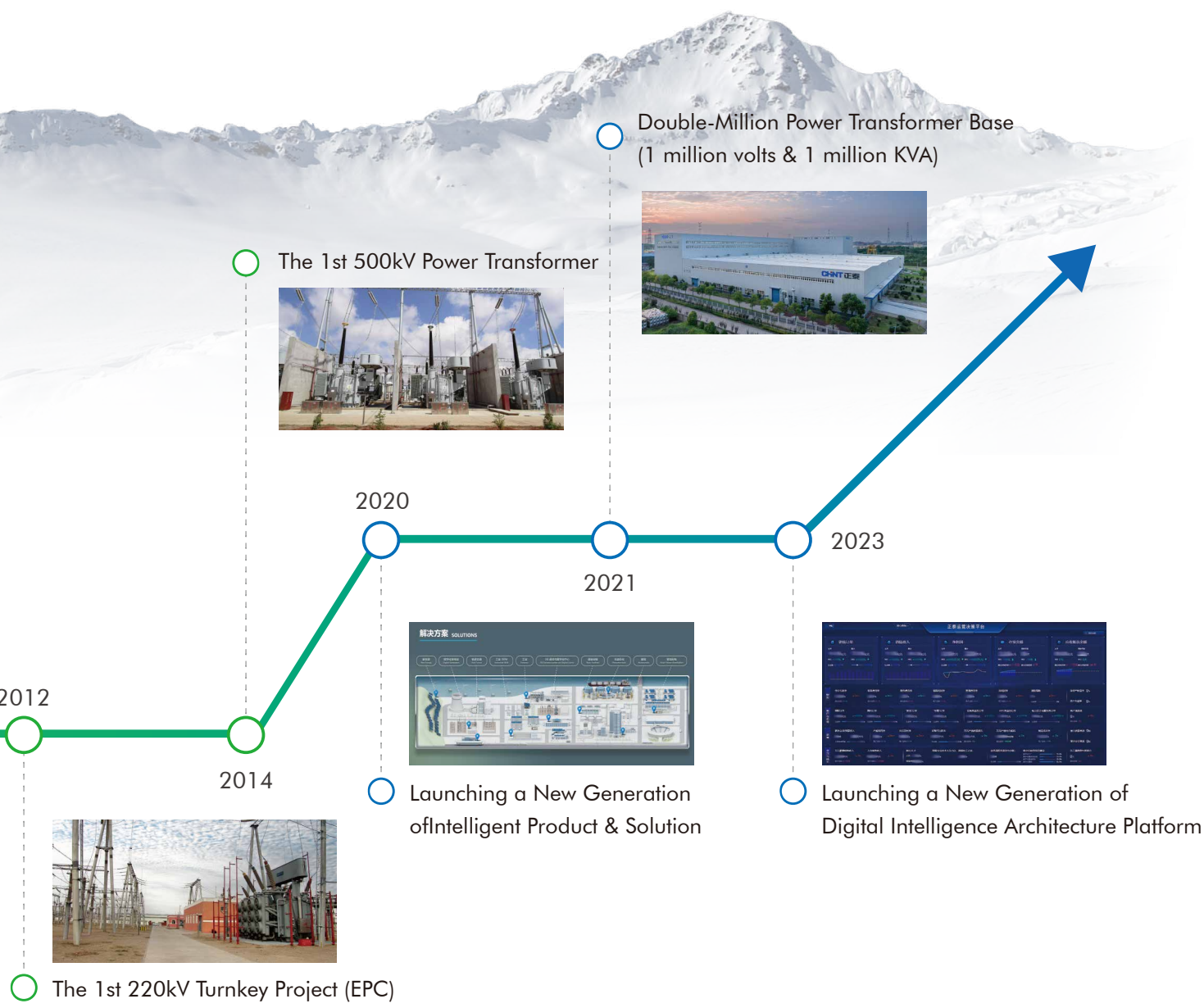
○ Launching the 1st 110kV Power Transformer

○ Winning the 1st Transformer Bidding



**MV/LV Complete Equipment Manufacturer**  
(1995-2004)

**T&D Equipment & Integration Service Provider**  
(2005-2019)



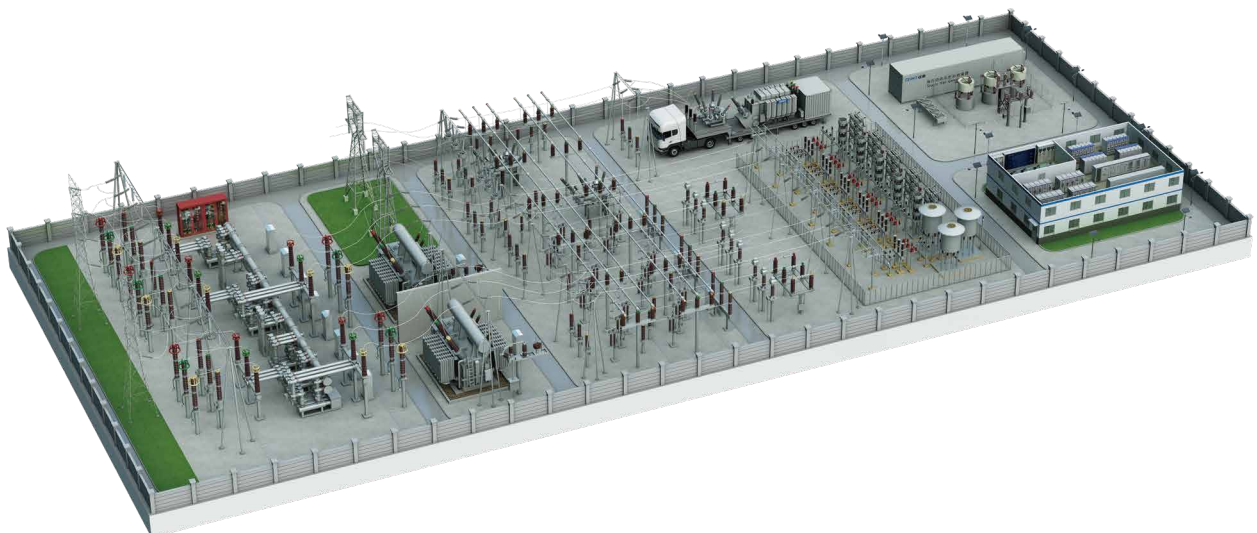
# CHINT ELECTRIC

## Product Line

The product series is designed solely for the electrical systems with maximum voltage 1000kV, covering around 2000 kinds of products within 150 series.

## Product Range

- Power Transformer (Up to 1000kV)
- HV Gas Insulated Switchgear (Up to 550kV)
- SF6 Circuit Breaker (Up to 252kV)
- Disconnecter (Up to 252kV)
- Instrument Transformer (Up to 252kV)
- Surge Arrester (Up to 500kV)
- Insulator (Up to 1000kV)
- Mobile Substation (Up to 245kV)
- Dry-Type Transformer (Up to 35kV)
- MV Air Insulated Switchgear (Up to 40.5kV)
- MV Gas Insulated Switchgear (Up to 40.5kV)
- LV Switchgear Panel (Up to 690V)
- Prefabricated Substation (Up to 40.5kV)
- Vacuum Circuit Breaker (Up to 40.5kV)
- Fuse (Up to 38kV)
- Cable & Wire (Up to 110kV)
- Shunt Reactor (Up to 550kV)
- Power Capacitor (Up to 400kV)
- SVG (Up to 35kV)
- Protection & Automation



# CONTENTS

---

<b>PART A – TRANSMISSION PRODUCTS</b>	01
• POWER TRANSFORMER	02
• HV GAS INSULATED SWITCHGEAR	03
• SF6 CIRCUIT BREAKER	04
• DISCONNECTOR	05
• HV INSTRUMENT TRANSFORMER	06
• HV SURGE ARRESTER & INSULATOR	07
• MOBILE SUBSTATION	08

---

<b>PART B – DISTRIBUTION PRODUCTS</b>	09
• MV OIL-IMMERSED TRANSFORMER	10
• DRY-TYPE TRANSFORMER	11
• MV AIR INSULATED SWITCHGEAR	12
• MV GAS INSULATED SWITCHGEAR	13
• LV SWITCHGEAR PANEL	14
• PREFABRICATED SUBSTATION	15
• VACUUM CIRCUIT BREAKER & CUT-OUT FUSE	16
• CAST RESIN INSTRUMENT TRANSFORMER	17
• MV SURGE ARRESTER & INSULATOR	18
• CABLE & WIRE	19

---

<b>PART C – POWER QUALITY &amp; AUTOMATION PRODUCTS</b>	20
• SHUNT REACTOR & VARIABLE SHUNT REACTOR	21
• POWER CAPACITOR	22
• SVG	23
• PROTECTION & AUTOMATION	24

---

<b>PART D – GLOBAL REFERENCES</b>	25
-----------------------------------	----

---

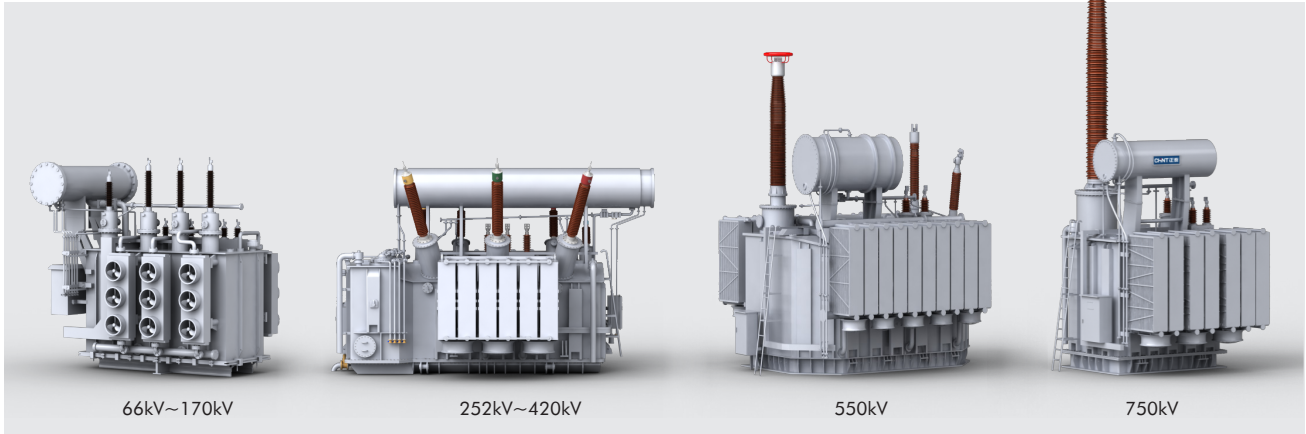
# TRANSMISSION PRODUCTS

**PART A**



# POWER TRANSFORMER

## Oil-immersed Power Transformer



Application: For power station, transformer substation, and industrial enterprises, etc..

Standards: ■ IEC, ANSI, IEEE, AS, EN, BS, GB, etc.

Parameters: ■ Rated Voltage: up to 1000kV

■ Capacity: up to 1200MVA (Three phases)

■ Capacity: up to 700MVA (Single phase)

Features:

■ High security and reliability in operation.

■ Economic and efficient to reduce network loss and operation cost.

■ High short circuit strength and insulating strength.

■ Compact design, Low noise and light in weight.

■ Customized transformers are available on your requirement.

■ Competitive short delivery time.



## Transformer immersed in natural ester insulating oil

Application: For power station, transformer substation, and industrial enterprises, etc..

Parameters: ■ Rated Voltage: up to 750kV

■ Capacity: up to 1200MVA (Three phases)

■ Capacity: up to 700MVA (Single phase)

Features:

■ High security, strong fire resistance.

■ Eco-friendly, low carbon emission.

■ Extend the life span of insulation paper.

■ High strength of heat withstand.

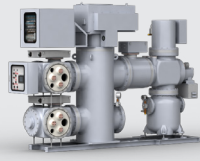
■ Good water resistance.

■ Reasonable electric field distribution.



※ Note: Contact us for more information.

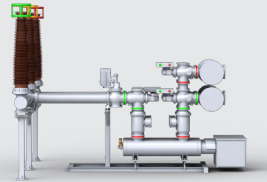
# HV GAS INSULATED SWITCHGEAR



145kV GIS



145kV HGIS



252kV GIS



550kV GIS

**Application:** For special power stations such as substation in city, contaminated region, hydropower station.

**Standards:** ■ IEC 62271-203

**Parameters:** ■ up to 550kV

**Features:**

- Reliable disconnecter.
- Perfect tightness.
- Reliability insulator.
- High adaptability.



※ Note: Contact us for more information.

# SF6 CIRCUIT BREAKER

## Live Tank Circuit Breaker



LW36-145

LW43-252

LW43A-252

## Dead Tank Circuit Breaker



ZHW-145

ZFW34A-252

Application: For control and protection of power system up to 220kV.

Standards: ■ IEC 62271-100

Parameters: ■ 145~252kV

- Features:
- Excellent breaking performance.
  - Good electrical performance and high insulation level.
  - High mechanical reliability, long maintenance cycle.
  - Easy installation, safe and reliable operation.



※ Note: Contact us for more information.

# DISCONNECTOR

## GW High-voltage Disconnecter



**Application:** In rated voltage 35~220kV power system, to separating the circuits under off-load status, set up air electrical cleaning between the tested electrical apparatuses and electrified circuit.

**Standards:** ■ IEC 62271-102

**Parameters:** ■ 40.5-252kV.

**Features:** ■ Simple structure, reliable operation.  
■ Simple installation and easy adjustment.  
■ Adopt anti - corrosion design, anti - corrosion performance.

## JW High-voltage Earthing Switch



**Application:** In 126-252kV power systems for HV busbars.

**Standards:** ■ IEC 62271-102

**Parameters:** ■ Rated voltage: 126kV, 145kV, 252kV.  
■ Rated short time withstand current, 3s: 40kA, 50kA.  
■ Rated lightning impulse withstand voltage: 550kV, 1050kV.

**Features:** ■ Compact structure, stable performance, reliable contact.  
■ The base is hot-dip galvanized and has good anticorrosive property.  
■ Simple installation and easy adjustment.



※ Note: Contact us for more information.

# HV INSTRUMENT TRANSFORMER

## Current Transformer



Application: For power, current measurement and relay protection.

Standards: ■ IEC 61869-1; IEC 61869-2;

Parameters: ■ up to 252kV, 50/60Hz

- Features:
- High security and reliability in operation.
  - Economic and efficient to reduce network loss and working cost.
  - High short circuit strength and insulating strength.
  - Low temperature rise. Low noise.
  - Customized current transformers are available on your requirement.
  - Competitive short delivery time.

## Voltage Transformer



Application: For power, voltage measurement and relay protection.

Standards: ■ IEC 61869-1; IEC 61869-3; IEC 61869-5

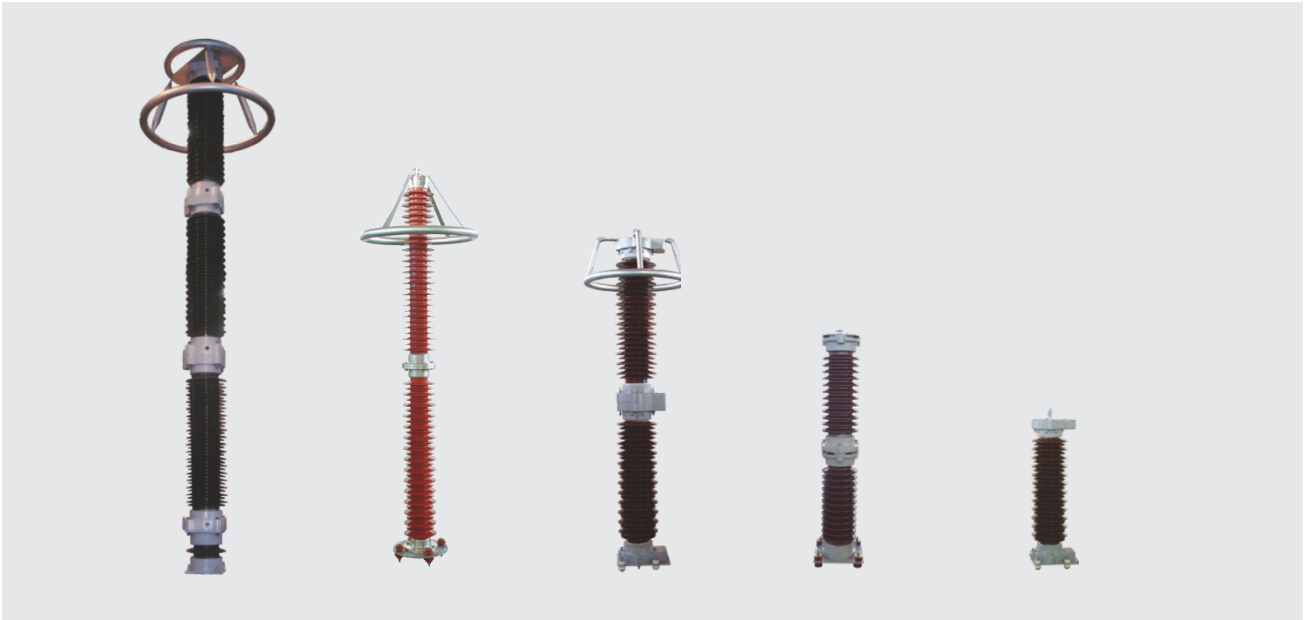
Parameters: ■ up to 252kV, 50/60Hz

- Features:
- High security and reliability in operation.
  - Economic and efficient to reduce network loss and working cost.
  - High insulating strength.
  - Low temperature rise. Low noise.
  - Customized potential transformer and capacitor voltage transformer are available on your requirement.
  - Competitive short delivery time.

※ Note: Contact us for more information.

# HV SURGE ARRESTER & INSULATOR

## Surge Arrester



Application: For protection of power transmission & distribution system from over- voltage.

Standards: ■ IEC 60099-4, IEEE C62.11

Parameters: ■ Up to 500kV

Features: ■ The metal oxide resistor has a large current capacity and excellent volt-ampere characteristics, effectively protecting power equipment;  
■ Composite cover has good hydrophobicity and pollution resistance, high reliability.

## Insulator

Application: Provide electrical insulation and mechanical support. Connect and fix charged bodies at different potentials.

Standards: ■ IEC 60120, IEC 60471, IEC 61109, IEC 61466, IEC 60815, IEC 62217, IEC 60507, IEC 62073, ANSI C29.11, ANSI C29.13

Parameters: ■ Up to 1000kV

Features: ■ Coaxial flexible crimping, high mechanical strength;  
■ The overall vulcanization molding has good sealing performance and meets the requirements of harsh environments;  
■ The umbrella cover is made of UV-resistant and high-temperature resistant silicone rubber, which has good water repellency and is suitable for use in plateau areas;  
■ Anti-vibration and anti-aging.



※ Note: Contact us for more information.

# MOBILE SUBSTATION



**Application:** CHINT mobile substation can be used in all aspects of power generation, transmission, transformation and distribution to provide customers with reliable and stable power supply.

**Standards:** ■ IEC, ANSI, IEEE, AS, EN, etc.

**Parameters:** ■ Rated Voltage: up to 245kV  
■ Capacity: up to 120MVA

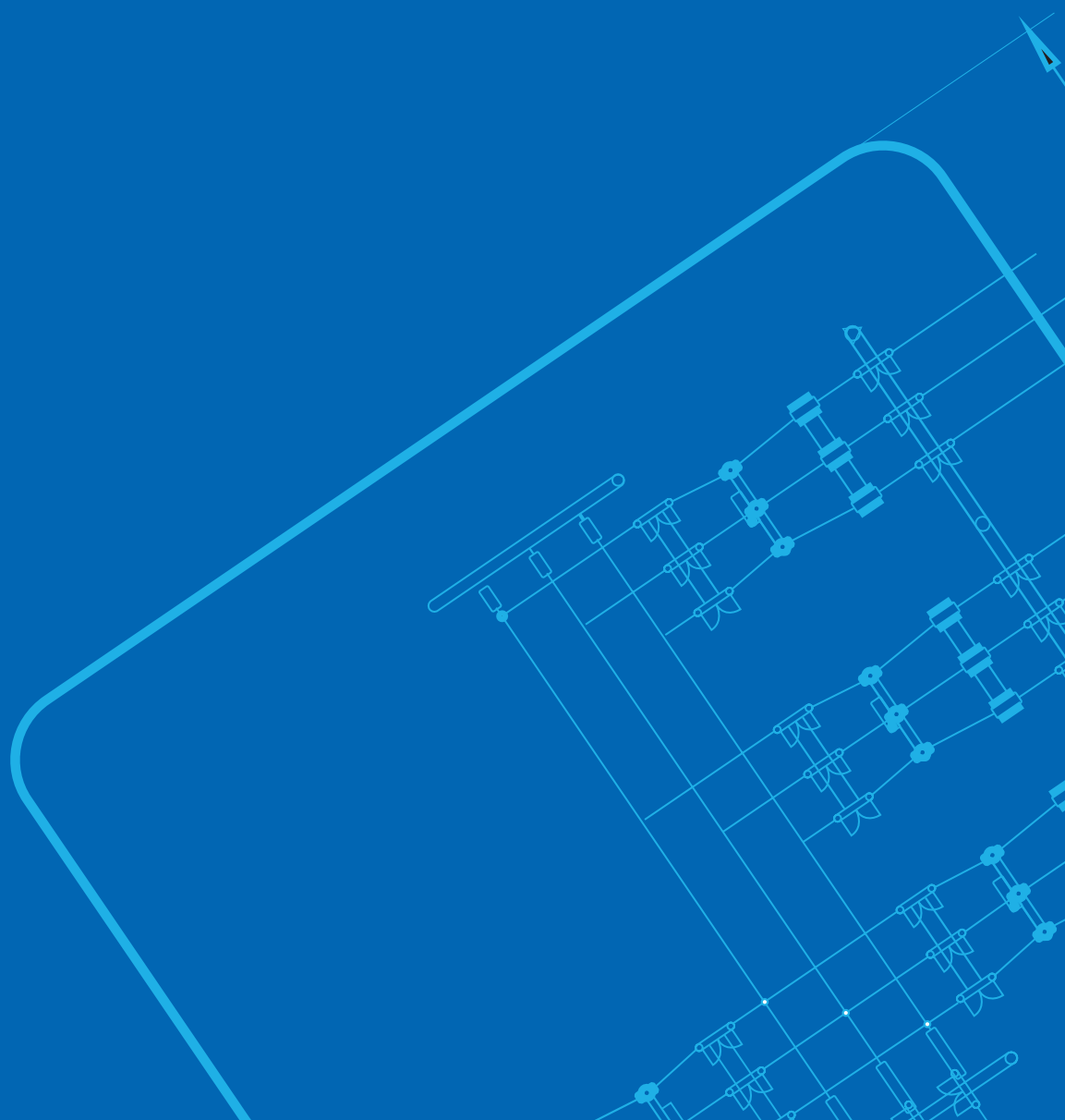
Features:	Customer value	Value embodiment
	Save	<ul style="list-style-type: none"> <li>■ Cost saving;</li> <li>■ Time saving;</li> <li>■ Land saving;</li> </ul>
	Fast	<ul style="list-style-type: none"> <li>■ No need for construction approval;</li> <li>■ Less preparation work before the operation, can be quickly put into operation;</li> </ul>
	Flexible	<ul style="list-style-type: none"> <li>■ Flexible, maximum mobility and flexibility, anytime/anywhere;</li> <li>■ The car can quickly reach the site;</li> <li>■ Easy to dismantle, easy to expand, easy to move;</li> </ul>
	Convenience	<ul style="list-style-type: none"> <li>■ Convenient maintenance and repair;</li> <li>■ Perfect service of global branch;</li> </ul>
	Wide	<ul style="list-style-type: none"> <li>■ Wide range of use;</li> <li>■ Customized design, wide applicability;</li> </ul>

※ Note: Contact us for more information.

---

# DISTRIBUTION PRODUCTS

**PART B**



# MV OIL-IMMERSED TRANSFORMER

## Distribution Transformer



Application: For distribution substation

Standards: ■ IEC 60076-1, IEC 60076-2, IEC 60076-3, IEC60076-4, IEC60076-5

Parameters: ■ 50/60Hz up to 40.5kV 50~10000kVA

Features: ■ High security, strong fire resistance.

■ High mechanical strength and short circuit resistance, good thermal stability, high reliability, long service life.

■ Good moisture resistance, which can meet the special requirements of metallurgical and petrochemical systems and wet and dirty areas.

■ Small size, light weight, easy to transport.



### ZGS-H(Z) Type Pad-mounted transformer

Application: Mainly for power distribution

Parameters: ■ 50/60Hz up to 10kV 100-1000kVA

Features: ■ US type distribution pad-mounted transformer with HV & LV compartments, easy for operation.

■ High security and reliability in operation.

■ Economic and efficient to reduce network loss and working cost.

■ Low noise.



### ZGS-Z.F Type Pad-mounted transformer

Application: For wind power generation

Parameters: ■ up to 40.5kV

Features: ■ High security and reliability in operation.

■ Economic and efficient to reduce network loss and working cost.

■ Low temperature rise.

■ Low noise.



### ZGS11-Z.T Type Pad-mounted transformer

Application: For photovoltaic power station

Parameters: ■ up to 40.5kV

Features: ■ High security and reliability in operation.

■ Economic and efficient to reduce network loss and working cost.

■ Low temperature rise.

■ Low noise.

※ Note: Contact us for more information.

# DRY-TYPE TRANSFORMER



Amorphous Alloy



10kV



40.5kV

**Application:** For locations having special fire safety requirements such as commercial buildings, high-rise buildings, airports, industrial and mining enterprises, power plants, oil platforms, subways, etc.

**Standards:** ■ IEC 60076-11

**Parameters:** ■ up to 40.5kV 150~25000kVA

**Features:** ■ Small size, light weight, easy to transport.  
■ High mechanical strength and short circuit resistance, good thermal stability, high reliability, long service life.  
■ High efficiency, low noise.  
■ Excellent heat dissipation and moisture resistance.



※ Note: Contact us for more information.

# MV AIR INSULATED SWITCHGEAR

## (Metalclad) Withdrawable AC Metal-enclosed Switchgear



KYN28A-12(Z)



KYN28A-24(Z)



KYN61-40.5(Z)

### Application:

- Power transmission and distribution
- Integration of renewable power generation units to the grid
- Offshore and onshore wind power connections
- Very large power plants
- Industry applications
- Long range power transmission



※ Note: Contact us for more information.

# MV GAS INSULATED SWITCHGEAR

## SF6 & SF6 Free Insulated Switchgear



Application: Ring network power supply or dual radiant power supply for 12~40.5kV power supply line.

Standards: 

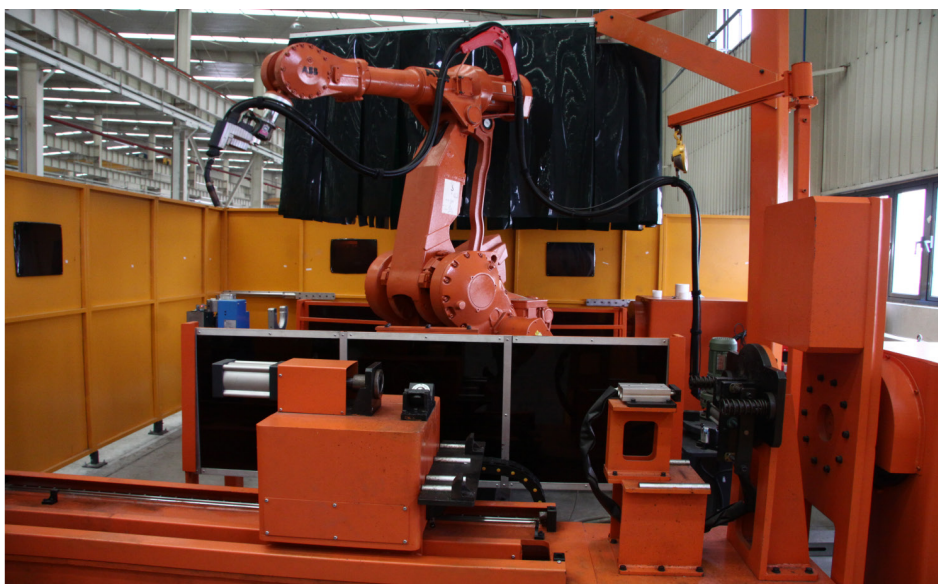
- IEC 62271-1
- IEC 62271-100
- IEC 62271-200

Parameters: 

- 12~40.5kV

Features: 

- Adapt to operation environment
- High level of protection
- Compact structure
- Flexible expansion
- Maintenance free
- Operation reliability
- Environmental friendly (SF6 Free)



※ Note: Contact us for more information.

# LV SWITCHGEAR PANEL

## LV Withdrawable Switchgear Panel



Application: For circuit control, protection, monitoring and power distribution in power distribution system.

Standards: ■ IEC 61439-2:2011

Parameters: ■ up to 400V(690V), 50/60Hz

- Features:
- High reliability
  - Simple structure
  - High insulation strength.
  - Fully sealed and reliable operation.

## DC Power Supply Panel



Application: As the DC power supply for the power plants and substations.

- Features:
- High reliability
  - Simple structure
  - High insulation strength.

## XL Enclosed power Cabinet



Application: For 3-phase 3-wire, 3-phase 4-wire, 3-phase 5-wire system in AC voltage up to 400V, serve for lighting power.

- Features:
- High reliability
  - Simple structure
  - High insulation strength.



## NGC8

Application: For circuit control, protection, monitoring and power distribution in power distribution system.

Standards: ■ IEC 61439-2:2011

- Features:
- High reliability
  - Simple structure
  - High insulation strength.



## EnergiX

Application: for power distribution, motor control, protection, monitoring.

Standards: ■ IEC 61439-2:2020

- Features:
- High Voltage: Up to 480V, 60Hz
  - High IP: Up to IP54
  - Antimagnetic design
  - Modularized design

※ Note: Contact us for more information.

# PREFABRICATED SUBSTATION

## YBM(P)29 Series HV/LV Prefabricated Substation



Application: Solar farm, wind farm, residential complexes, high-rise buildings, shopping malls, industrial enterprises, airport, wharf, temporary power supply.

Standards: ■ IEC 62271-202:2022

Parameters: ■ High voltage up to 40.5kV

■ Capacity up to 10MVA

Features: ■ Highly integrated

■ Flexibility in customization

■ Convenient transportation

■ Quick installation

■ Excellent heat dissipation and moisture resistance



Distribution



Solar Farm



Wind Farm

## YB29 Series E-House Solution



Application: Infrastructure, utilities, petrochemical industries, mining and minerals, and other situations where space is limited or require short construction cycles.

Parameters: ■ up to 110kV

Benefits: ■ Cost saving

■ Time saving

■ High safety

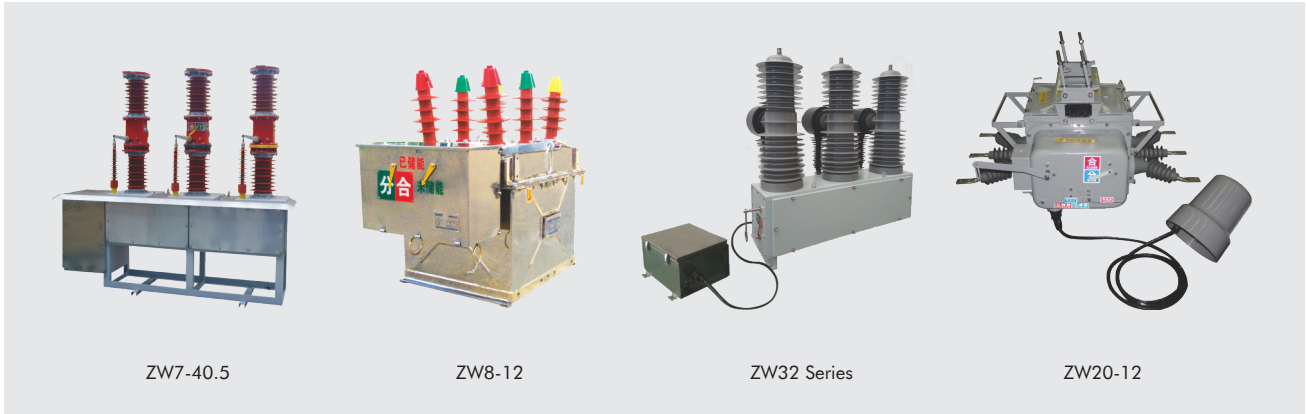
■ Space optimization

■ All-in-one solution

※ Note: Contact us for more information.

# VACUUM CIRCUIT BREAKER & CUT-OUT FUSE

## Vacuum Circuit Breaker (Outdoor)



ZW7-40.5

ZW8-12

ZW32 Series

ZW20-12

**Application:** Widely used in medium voltage distribution network protection and control in energy and infrastructure and industrial civil buildings.

**Standards:** ■ IEC 62271-100

**Parameters:** ■ up to 40.5kV

**Features:** ■ High reliability  
■ Simple structure  
■ High insulation strength.

## Cut-out Fuse



RW12-15/100

RW12-36/100

**Application:** protection device for protecting power system from over load and short-circuit failure.

**Standards:** ■ IEC 60282-1, IEC 60282-2, IEEE C37.42

**Parameters:** ■ 12kV~36kV

**Features:** ■ High breaking capacity;  
■ The new contact structure and special surface treatment meet the requirements of harsh environments;  
■ The melting tube does not absorb moisture, deform, and resist ultraviolet rays;  
■ Easy installation and flexible operation.

※ Note: Contact us for more information.

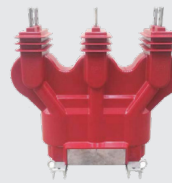
# CAST RESIN INSTRUMENT TRANSFORMER



Current Transformer



Voltage Transformer



Combined Transformer

Application: For power, current measurement and relay protection.

Standards: ■ IEC 61869-1, IEC 61869-2, IEC 61869-3

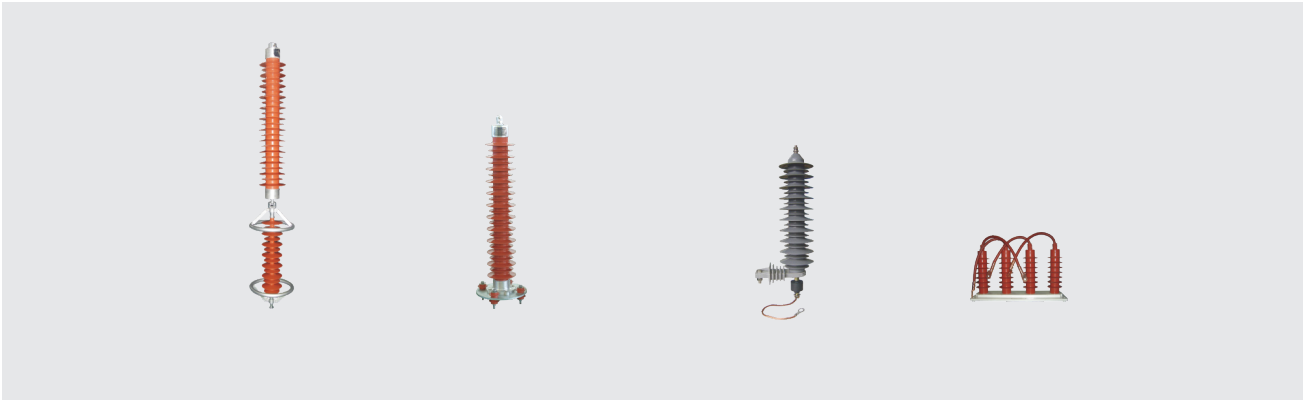
Parameters: ■ up to 40.5kV, 50/60Hz

- Features:
- High security and reliability in operation.
  - Economic and efficient to reduce network loss and working cost.
  - High short circuit strength and insulating strength.
  - Low temperature rise. Low noise.
  - Customized products are available on your requirement.
  - Competitive short delivery time.

※ Note: Contact us for more information.

# MV SURGE ARRESTER & INSULATOR

## Surge Arrester



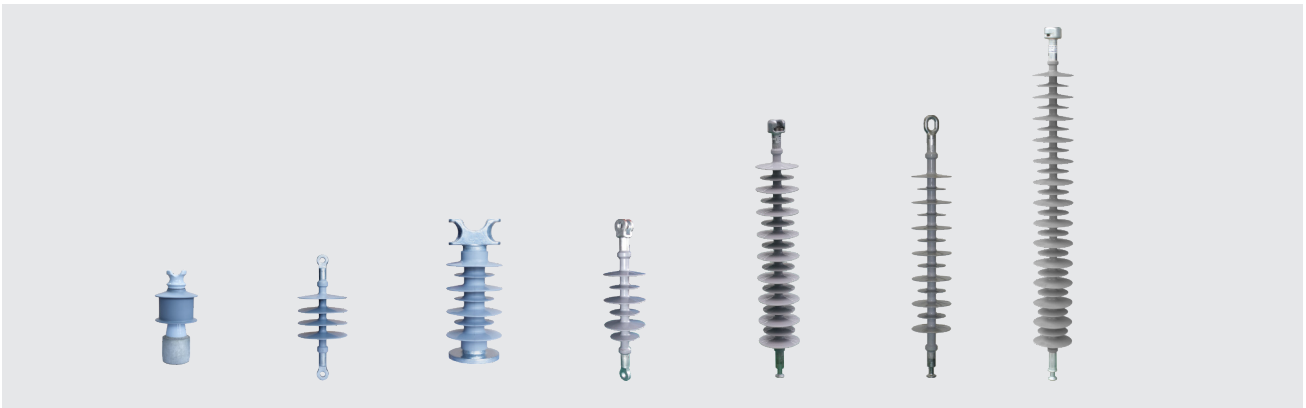
Application: For protection of power transmission & distribution system from over- voltage.

Standards: ■ IEC 60099-4, IEEE C62.11

Parameters: ■ Up to 66kV

Features: ■ The metal oxide resistor has a large current capacity and excellent volt-ampere characteristics, effectively protecting power equipment;  
■ Composite cover has good hydrophobicity and pollution resistance, high reliability.

## Insulator



Application: Provide electrical insulation and mechanical support. Connect and fix charged bodies at different potentials.

Standards: ■ IEC 60120, IEC 60471, IEC 61109, IEC 61466, IEC 60815, IEC 62217, IEC 60507, IEC 62073, ANSI C29.11, ANSI C29.13

Parameters: ■ Up to 66kV

Features: ■ Coaxial flexible crimping, high mechanical strength;  
■ The overall vulcanization molding has good sealing performance and meets the requirements of harsh environments;  
■ The umbrella cover is made of UV-resistant and high-temperature resistant silicone rubber, which has good water repellency and is suitable for use in plateau areas;  
■ Anti-vibration and anti-aging.

※ Note: Contact us for more information.

# CABLE AND WIRE



## Cable and wire

**Application:** It is widely used in the departments of electricity, construction, industrial & mining, metallurgy, petrochemicals and communication in transmission and distribution.

**Standards:** ■ IEC,HD,BS

**Parameters:** ■ Up to 220kV

**Features:** ■ High fire-resistance capability.  
■ Maintenance free.  
■ Operation reliability.

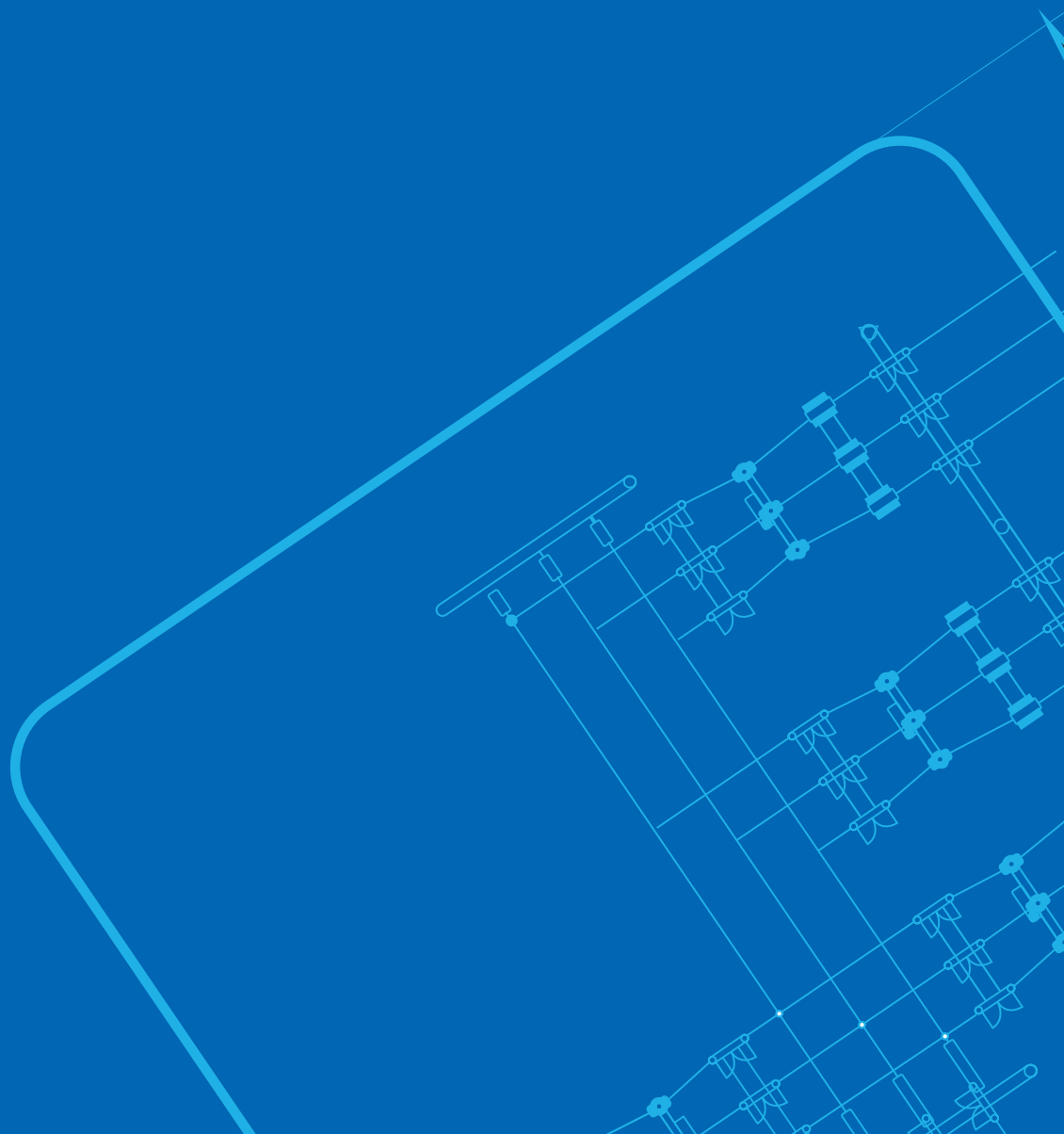


※ Note: Contact us for more information.

---

# POWER QUALITY & AUTOMATION PRODUCTS

**PART C**



# SHUNT REACTOR & VARIABLE SHUNT REACTOR



550kV



252~420kV



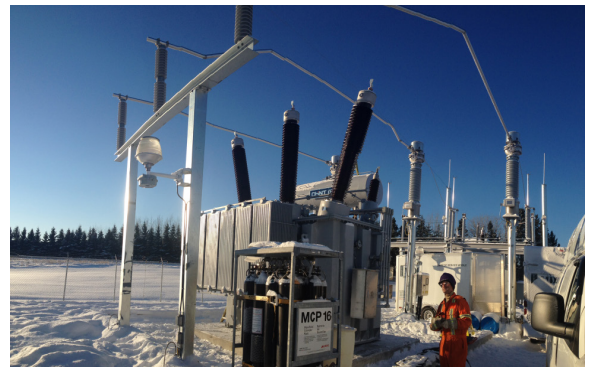
40.5~170kV

**Application:** It is suitable for substation and power plant, which is parallel connection in power system. It is mainly used to compensate capacitor current, reduce transmission loss and suppress the lift and capacitive operation of light load, improve system stability and prevent abnormal voltage generation.

**Standards:** ■ IEC, ANSI, IEEE, AS, EN, BS, GB, etc.

**Parameters:** ■ up to 550kV

**Features:** ■ Low noise.  
■ Low losses.  
■ Compact structure.



※ Note: Contact us for more information.

# POWER CAPACITOR



**Application:** For enhancement of power factor, lowering circuit loss and improve voltage quality.

**Standards:** ■ IEC 60871

**Parameters:** ■ up to 400kV

**Features:** ■ High reliability, with a service life of more than 30 years;  
■ Low investment in equipment and high cost performance;  
■ Suitable for various operating environments, good environmental adaptability.



※ Note: Contact us for more information.

# SVG



**Application:** These products are used in various fields of power generation, transmission, distribution, use, and provide users with value in improving power factor, adjusting bus voltage, filtering, and improving energy supply reliability.

**Parameters:** ■ Up to 35kV, 100Mvar.

- Features:**
- Keep the system with power factor  $\geq 0.98$ ;
  - Continuous variation from inductive reactive power to capacitive reactive power range;
  - THD:  $\leq 3\%$ ;
  - Faster response time:  $\leq 5\text{ms}$ .



※ Note: Contact us for more information.

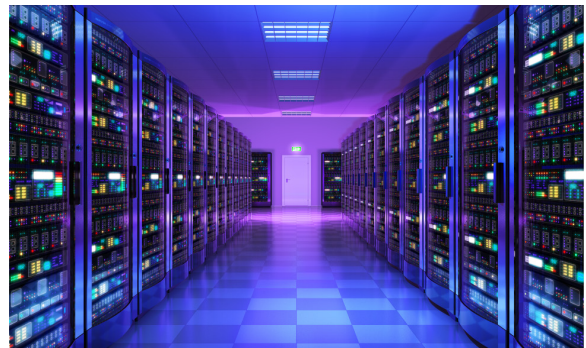
# PROTECTION & AUTOMATION



Application: For monitoring and protecting power equipment, distribution network and substations.

Standards: ■ IEC60255-1, IEC60870-1

Features: ■ Functional integration of protection, control, measurement, communication and automation.  
■ High-performance hardware platform and reliable & uniform software platform.

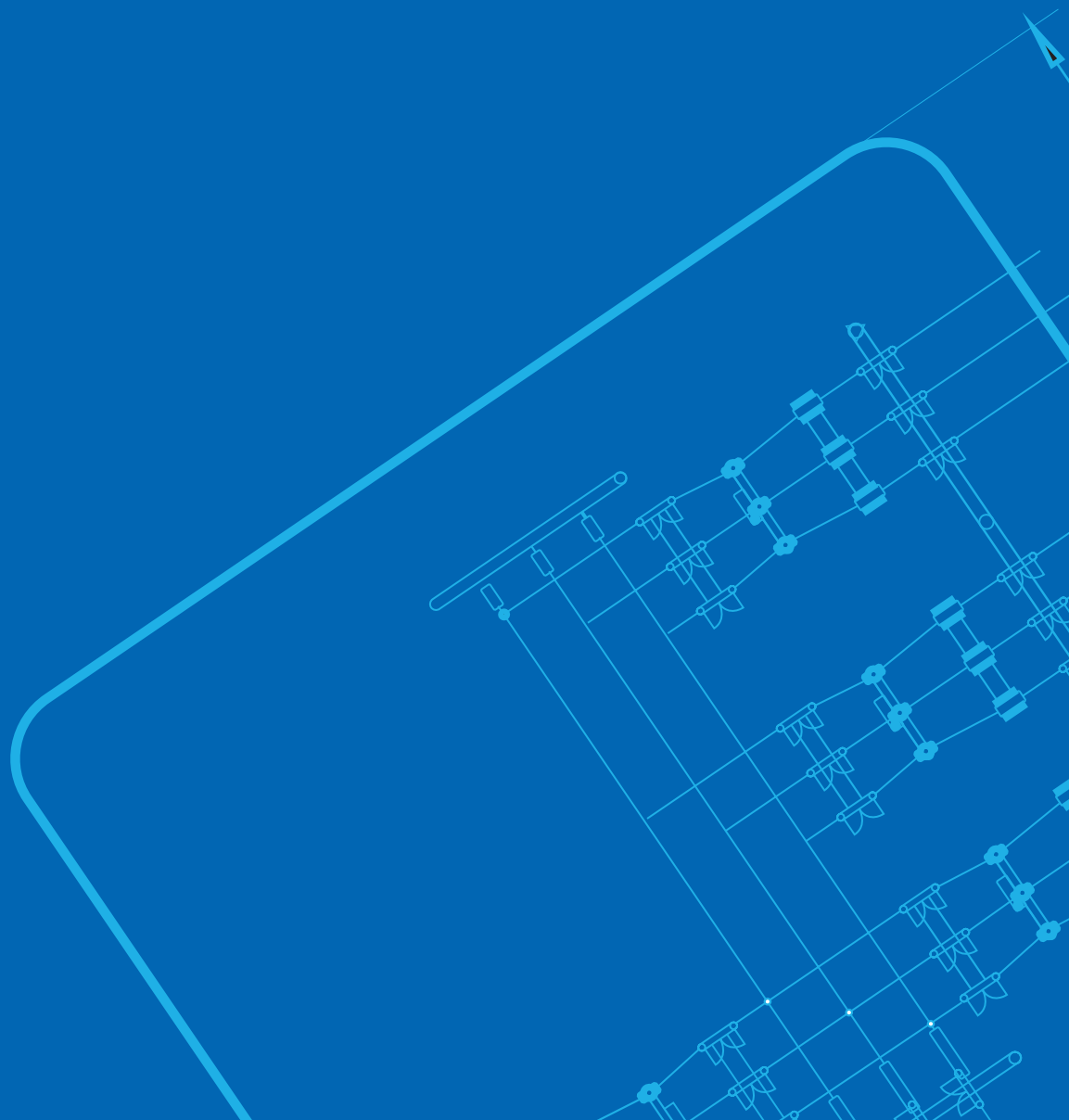


※ Note: Contact us for more information.

---

# GLOBAL REFERENCES

**PART D**



# SALES REFERENCE FOR TRANSFORMERS AND REACTORS



220kV 125MVA transformer to BPC, Botswana



132kV 30MVA ,Power transformer to Kuwait



525kV 525MVA , Power transformer to USA



400kV 300MVA ,Power transformer to CGES , Monre negro



161kV 15Mvar Reactor to SECL , Canada



100MVA/220kV POWER TRANSFORMER for ENEL to Chile



220kV 50Mvar ,Shunt Reactor to Chile



110kV 40MVA Power Transformer to Enersis, Chile



225kV 200MVA ,Power Transformer to Vattenfall



132kV 30MVA ,Power transformer to Kuwait



400kV 300MVA ,Power transformer to CGES , Monre negro



400kV 60Mvar , Reactors to Botswana



Philippine Nexif Energy CARE 75MW Solar Power Plant

※ Note: Contact us for more information.

# SALES REFERENCE FOR TRANSFORMERS AND REACTORS

## SALES REFERENCE FOR TRANSFORMERS AND REACTORS



230kV 570MVA Step-up Generator Transformer in Puerto Rico



400kV 200MVA Transformer to KETRACO-Kenya



Philippine PAVI GREEN 20MW Orion Solar Plant



220kV 225MVA Transformer to CELEC ,Ecuador



400kV 400MVA Transformer to EMS, Serbia



110kV 63MVA Transformer to SEMO , Bulgaria



115kV 90MVA Transformer to First Quantum Minerals, Finland



150kV 80MVA Transformer to Alliander, Netherlands

※ Note: Contact us for more information.

# REFERENCE OF 145KV GIS



110kV GIS at Allinder Substation in Nederland



145kV GIS in Angola



More than 400 bays 145kV GIS installed at MEW SS in Kuwait



18 bays 145kV GIS – Amsterdam Schiphol airport project



145kV GIS in Ukraine international airport



145kV GIS - Honduras

※ Note: Contact us for more information.

# REFERENCE OF 145KV CIRCUIT BREAKER



Aksey 100MW Solar Project



Aggreko(UK) Mozambique 275kV step-up substation



Congo



Armenia



66kV AIS at TEPCO substation in Japan

# REFERENCE OF 252KV GIS



252kV GIS in Dalian Solar project



252kV GIS Panama project



252kV GIS In Philippine



252kV GIS AGGREKO UK Cote d'Ivoire project



252kV HGIS xinjiang fianbei substation

※ Note: Contact us for more information.

## REFERENCE OF 252KV CIRCUIT BREAKER



Aggreko(UK) Mozambique 275kV step-up substation



Uzbekistan Navoi solar plant project



Tanzania 220kV Substation

## REFERENCE OF HGIS



Jiangxi China



Zhejiang China



India Projects



Guizhou China



Suzhou China



India substation

※ Note: Contact us for more information.

# REFERENCE OF DISCONNECTOR



Armenia



66kV AIS at TEPCO substation in Japan



Mozambique



Botswana



Cambodia



Wind power plant in Romania



Bulgaria

※ Note: Contact us for more information.

# REFERENCE OF MV SWITCHGEAR



Beijing Airport



Egypt project



Southern Grid



Huazhong Normal University



Thailand



Vaheidate 110kV substation Tadjhikistan



AK Altynalmas substation Kazakhstan



Australia

※ Note: Contact us for more information.

# REFERENCE OF CAPACITOR & SVG



Mexico wind power plant AMISTAD IV project TAL34.5-7560/315-BLW



Mexico wind power plant AMISTAD II project TBB34.5-6600/550-BLW



Mexico Power Plant Project ZTSVG-C3/23T-O-W



Afghanistan 220 kV Outdoor Capacitor Complete Plant  
Project TBB220-40000/346-BLW



Tanzania Voltage drop compensation project for Buly Gold Mine  
project ZTSVG-C15/6.6-O-W



Philippine NGCP Compostela Substation

※ Note: Contact us for more information.

# REFERENCE OF PREFABRICATED SUBSTATION



Kazakhstan 100MW solar power project



Anhui wind power project



KSA Red Sea Project



Nigeria KANO Solar Farm Project



UK Trina Project



Philippine Data Center Project



Singapore 200MW BESS Project



G2E 33kV0.4kV 4MVA Power Transformer Project

# REFERENCE OF MOBILE SUBSTATION



Shanghai 132kV Project

※ Note: Contact us for more information.

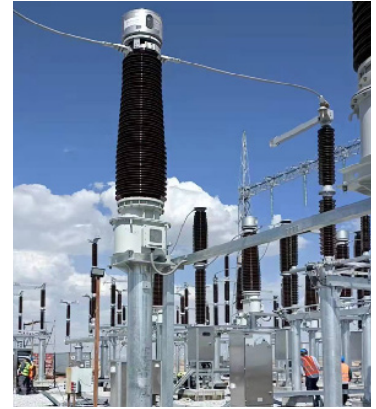
# REFERENCE OF PT&CT



Serbia National Grid Project

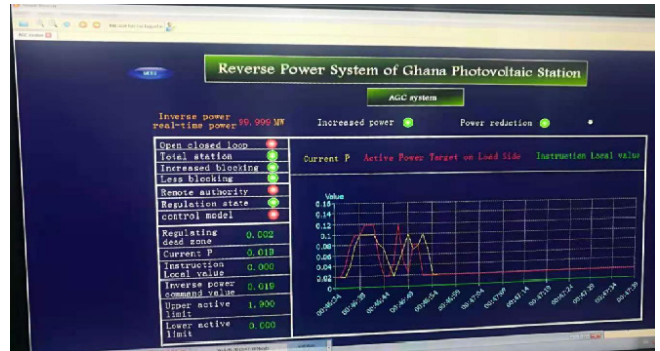


Spain project



American APR Corporation  
Japan TEPCO Project

# TYPICAL CASES OF AUTOMATION SYSTEM



DRC power transmission and transformation Project and pv inverse power control project



Zhejiang Outai 150MW Agrooptical complementary  
110kV substation



110kV substation of Longnan Hongyan Wind Power  
Plant of State Power Corporation



※ Note: Contact us for more information.

## Asia Pacific

### China | Global HQ

ZHEJIANG CHINT ELECTRICS CO., LTD.

Add: A3 Building, No. 3655 Sixian Road, Songjiang Shanghai 201614.  
Tel: +86 21 5677 7777  
Fax: +86 21 5677 7777  
E-mail: global-sales@chintglobal.com  
Web: www.chintglobal.com

### Vietnam

CHINT Vietnam Holding Co., Ltd

Add: So 2Bis-4-6, Le Thanh Ton, P. Ben Nghe Quan 1, Ho Chi Minh, Vietnam.  
Tel: +84 0283 8270 015  
E-mail: marketing.vn@chintglobal.com  
Web: www.chintglobal.vn

Sunlight Electrical (VN) Co., Ltd

Add: 20 Doc Lap Ave, VSIP, Thuan An City, Binh Duong Province, Vietnam.  
Tel: +84 0274 3743 505  
E-mail: sales.sev@sunlightgroup-vn.com.vn  
Web: www.sunlightvietnam.com.vn

### Korea

CHINT Electric Korea Co.,LTD

Add: B501, 40, Imiro, Uiwang-Si, Gyeonggi-Do, KOREA 16006.  
Tel: +82 31 8068 7099  
E-mail: lrning@chint.com  
Web: https://www.chintglobal.kr

### India

CHINT India Energy Solution Private Limited

Add: Discovery Tower, Plot No. A-17, Ground Floor Industrial Area Sector 62 Noida, India 201309.  
Tel: +91 1202 9750 57  
E-mail: marketing@chint.co.in  
Web: www.chint.co.in

### Malaysia

Alpha Automation (Selangor) Sdn. Bhd.

Add: No. 11, Temasya 18, Jalan Pelukis U1/46B, Seksyen U1, 40150 Shah Alam, Selangor.  
Tel: +603-5569 7787  
Fax: +603-5569 9295  
Email: chintmalaysia@alphasel.com  
Web: www.alphasel.com

## Singapore | Asia Pacific HQ

CHINT GLOBAL INTERNATIONAL PTE LTD

Add: 8 Kallang Avenue, #04-06/09 Aperia Office Tower 1, Singapore 339509.  
Tel: +65 6329 3110  
Fax: +65 6329 3159  
E-mail: sales.apac@chint.com  
Website: www.ChintGlobal.com

SUNLIGHT ELECTRICAL PTE LTD

Add: 1 Third Chin Bee Road, Singapore 618679.  
Tel: +65 6741 9055  
Fax : +65 6265 4586  
E-mail: sales@sunlightgroup.com  
Web: www.sunlightgroup.com

### Cambodia

CHINT (Cambodia) Power Equipment Co., Ltd

Add: No.15, St. 542, Sangkat Boeung Kok 1, Khan Toul Kork, Phnom Penh, Cambodia.  
Tel: +855 23 231 077  
E-mail: lbin3@chintglobal.com  
Web: www.chintglobal.com

SchneiTec CHINT Co., Ltd

Add: Ansor Kdam Village, Sna Ansa Commune, Krakor District, Pursat Province, Cambodia  
Tel: +855 09 5353 268  
E-mail: liubin@schneitec-chint.com.kh / info@schneitec-chint.com.kh  
Web: www.schneitec-chint.com.kh

### Indonesia

PT. CHINT Indonesia

Add: Kompleks Prima Center I, Blok C9-10, Jl. Pesing Poglar Jl. Pool PPD No. 11, RT.9/RW.2, Cengkareng, Jakarta Barat.  
Tel: +62 21 5436 3000  
E-mail: sales@chint-indonesia.com  
Web: www.chint-Indonesia.com

### Philippines

CHINT ELECTRIC CO., LTD

Add: Unit 201, Taipan Place, F. Ortigas Jr. Road, Ortigas Center, Pasig City, Metro Manila, Philippines  
Tel: +63 (2) 83653068  
E-mail: liq07@chintglobal.com / chintph@chintglobal.com  
Web: www.chintglobal.com

## West Asia & Africa

### Egypt

CHINT Electrics (Egypt) Co., Ltd

Add: Building (B123-C11) Smart Village, Abu Rawash, Giza - Egypt  
Tel: (+20) 235 373 725/(+20) 235 373 735  
P.O BOX : 00202  
E-mail: chinteg@chintglobal.com

CHINT EGEMAC for Electrical Products co. Ltd

Add: Area No.4B inside area No.6 Developers Industrial Zone, Eloula industrial compound, 6th of October, Giza, Egypt.  
E-mail: ahmed.bayoumi@chint-egemac.com  
Tel: (+2) 01064108151/01202348586  
Fax: (+2)38642389  
Web: www.CHINT-EGEMAC.com

### Saudi Arabia

CHINT AJLAN AND BROTHERS ELECTRICAL CO., LTD

Add: East Ring Rd Ext, New Industry Area, Riyadh 14338 KSA  
E-mail: chint-ajlanbros@chint.com  
Web: www.chint-ajlanbros.com

CHINT ARABIAN ELECTRICAL INDUSTRIAL CO., LTD.

Building NO 7183, 3RD Industrial City, Damman Kingdom of Saudi Arabian  
Tel: 966557951923  
E-mail: Belal.Abdel@chintglobal.com  
Web: www.chint-atc.com

### U.A.E

CHINT MIDDLE EAST AND AFRICA DMCC

Add: Unit No. 2101, Jumeirah Business Center 1, Jumeirah Lakes Towers, Dubai, UAE  
Tel: +97145571532  
P.O BOX: 337555  
E-mail: global-sales@chintglobal.com  
Web: https://chintglobal.com

### Uganda

CHINT METERS&ELECTRICAL UGANDA CO. LTD

Add: PLOT 378,TIRINYI ROAD, TANGSHAN MBALE INDUSTRIAL PARK, MBALE,UGANDA  
Tel: +256 741242096  
E-mail: chintuganda@chint.com

### Nigeria

CHINT POWER&ENERGY SERVICES LIMITED

Add: 3rd Floor, Churchgate Tower 2, PC 31 Churchgate Street, Victoria Island, Lagos Nigeria  
Tel: 08034339907  
E-mail: gazubuike@chintglobal.com

### Kenya

ZHENGTAI ELECTRICS(KENYA) CO., LIMITED

Add: OFFICE 1A, 8TH FLOOR, KISM TOWERS, LR No. 209/945/1- NGONG ROAD - NAIROBI, KENYA  
Tel: +254 713 871 243  
E-mail: chintkenya@chintglobal.com

## Europe

### Italy

CHINT ITALIA INVESTMENT SRL

Add: Via Bruno Maderna 7 30174 Venezia  
 Tel: +39 041.446614  
 Fax: +39 041.5845900  
 E-mail: info@chint.it

### Czech Republic

NOARK Electric Europe s.r.o.

Add: Sezemická 2757/2, 193 00 Prague 9  
 Tel: +420 226 203 120  
 E-mail: europe@noark-electric.com

### Turkey

CHINT Turca Elektrik Sanayi VE Ticaret Anonim Sirketi

Add: Zumrutevler Mahallesi Ural Sokak No. 22/18 NAS PLAZA B Block KAT 1,  
 Maltepe, Istanbul  
 Tel: +90216 621 00 55  
 Fax: +90216 621 00 50  
 E-mail: fatura@chint.com.tr

### Spain

CHINT ELECTRICS S.L.

Add: Calle José Echegaray, Num 8.Parque Empresarial Las RozasEdificio 3, Planta  
 Baja, Oficina 7-8.C.P: 28232 Las Rozas (Madrid)  
 Tel: +34 91 645 03 53  
 E-mail: info@chint.eu

## Latin America

### Brazil

CHINT ELÉTRICOS AMÉRICA DO SUL LTDA.

Add: Av. Paulista, 1765 - Edifício Scarpa - Conjunto 22 ,  
 Bela Vista - CEP 01311-200 - São Paulo - SP  
 Tel: +55 (11) 3266-7786  
 E-mail: chintbr@chint.com

### Peru

CHINT LATAM (PERU) S.A.C.

Add: Av. Camino Real No.348, Torre El Pilar, Oficina 603, San Isidro, Lima 27, Peru  
 Tel: +51 1 763 4917  
 E-mail: chintlatamperu@chint.com

### Ecuador

CHINT ELECTRICS (HONG KONG) LIMITED (ECUADOR BRANCH)

Add: Calle: REP.DEL SALVADOR Número: 10-84 Intersección: AV NACIONES UNIDAS  
 Edificio: CENTRO COMERCIAL MANSION BLANCA  
 E-mail: lufz@chintglobal.com

### Netherlands

CHINT ELECTRICS NETHERLANDS B.V

Add: Kabelweg 57, 1014 BA Amsterdam  
 Tel: +31 85 210 08 06  
 E-mail: salesnl@chintglobal.com

### Kazakhstan

LLP CHINT KZ

Add: Almaty, Dostyk Avenue 210A, Business Centre "Koktem Grand, 5th Floor,  
 Office 51  
 Tel: +7 727 325 9990  
 E-mail: chint-kz@chintglobal.com

### Romania

NOARK ELECTRIC ROMANIA

Add: Tudor Vladimirescu nr. 45 et. 5 cod postal 050881 Sector 5 , Bucuresti  
 Tel: +40 371 444 920  
 E-mail: InfoRO@noark-electric.com

### Poland

NOARK ELECTRIC POLAND

Add: ul. Michała 62 61-005 Poznań  
 Tel: +48 785 765 825  
 E-mail: monika.malczewska@noark-electric.com

### UK

CHINT GLOBAL (UK) LIMITED

Add: 4TH FLOOR 1-3 PEMBERTON ROW, LONDON, UNITED KINGDOM EC4A 3GB

### France

CHINT ELECTRICS FRANCE

Add: Tour Trinity, 1b place de la Défense,92400 Courbevoie, France

## North America

### United States

NOARK Electric (USA) Inc

Add: 2188 Pomona Blvd., Pomona, CA 91768  
 Tel: 626-330-7007  
 Fax: 626-330-8035  
 E-mail: nasales@noark-electric.com

### Mexico

CHINT SOLAR MEXICO S DE RL DE CV

Add: Blvd. Miguel de Cervantes 301, Piso 15, C.P 11520,  
 Colonia Granada, Alcaldía Miguel Hidalgo, CDMX  
 C.P. 11520 CDMX, México  
 Tel: +52 1-55-8881-6127  
 E-mail: info@chint-mexico.com



CHINT GLOBAL PTE. LTD.  
 Building A3, 3655 SiXian Road,  
 Songjiang District, Shanghai, China

Tel: +86-21-5677 7777 Web: www.chintglobal.com  
 E-mail: global-sales@chintglobal.com

A CHINT COMPANY

